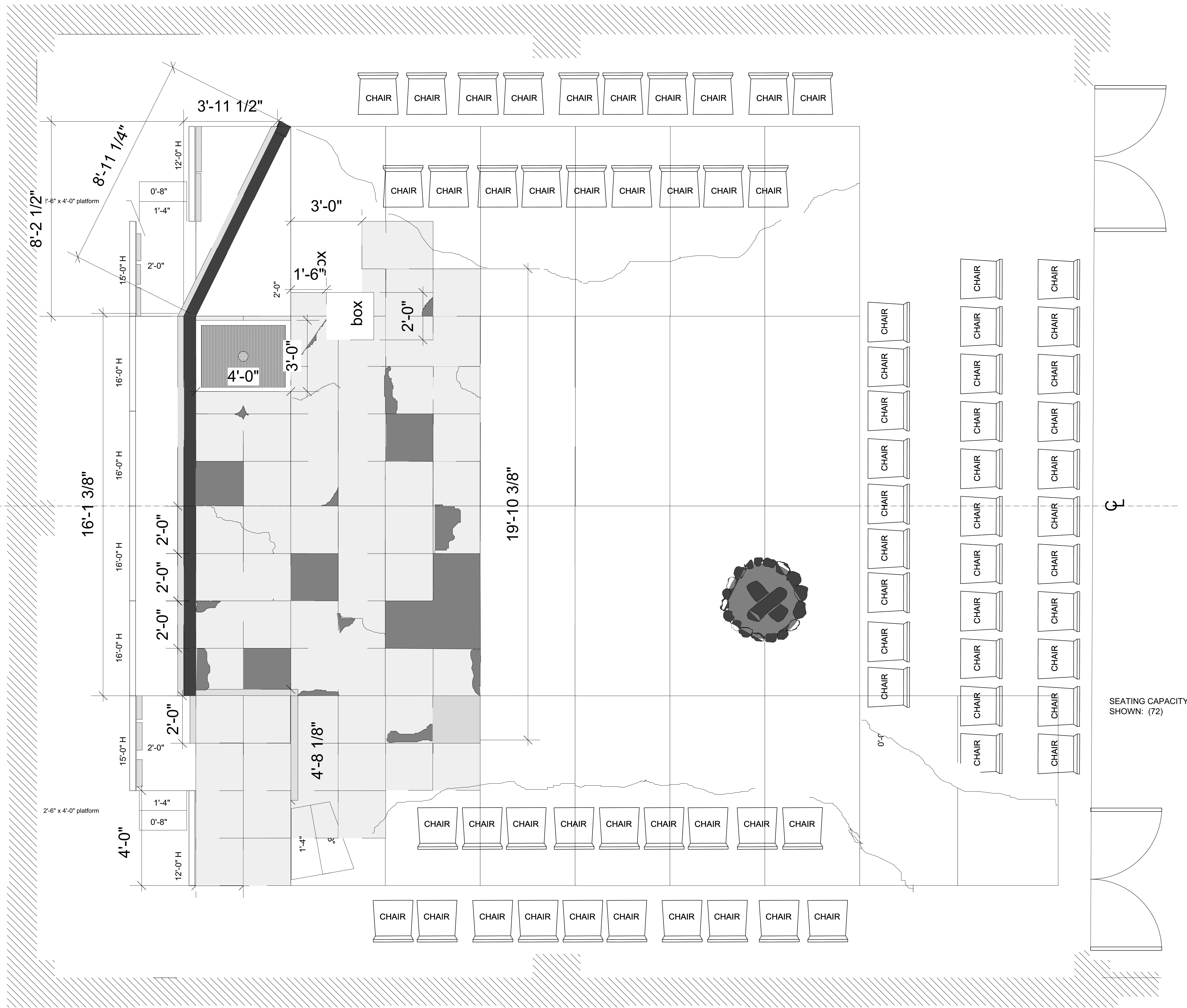


SCENIC INVENTORY:

- PLATFORMS:**
 (2) 4' X 8' @ 8"
 (1) 4' X 4' @ 8"
 (2) 4' X 8' @ 2'-0"
 (2) 3' X 3' @ 2'-0"
- STEP UNITS:**
 (2) TWO-STEPS @ 3'-0"W
 (4) TWO-STEPS @ 2'-0"W
- FLATTAGE:**
 (5) 4'-0" W X 8'-0" H
 (8) 4'-0" W X 10'-0" H
- MASONITE/STAGE PLATFORMS:**
 (2) @ 4'-0" X 8'-0"
 (2) @ 3'-0" X 3'-0"
- MASONITE/THEATRE FLOOR:**
 (10) @ 4'-0" X 8'-0"



THIS DRAWING REPRESENTS VISUAL CONCEPTS AND CONSTRUCTION SUGGESTIONS ONLY. THE DESIGNER IS UNQUALIFIED TO DETERMINE THE STRUCTURAL APPROPRIATENESS OF THE DESIGN & WILL NOT ASSUME RESPONSIBILITY FOR IMPROPER ENGINEERING, CONSTRUCTION OR USE. ALL MATERIALS AND CONSTRUCTION MUST MEET THE MOST STRINGENT LOCAL SAFETY FIRE CODES.

USI Theatre: 2019-20 Season
Eclipsed
 by Danaí Gurriá

Drawing:
 GROUNDPLAN
 W/ SEATING

Notes and Revisions:

Location:
 Mallette Theatre
 Univ. of Southern Indiana

Directed by:
 Jasmelia Williams

Scenic Design By:
 Jacelyn Stewart

Lighting Design By:
 Zak Johnston

Technical Director:
 Jason Merslich

Drawn By:
 JAS

Date:
 2/16/20

Scale:
 1/2" = 1'-0"

Plate:
1
 of 7

REVISION DATE:
 2/16/20

THIS DRAWING REPRESENTS VISUAL CONCEPTS AND CONSTRUCTION SUGGESTIONS ONLY. THE DESIGNER IS UNQUALIFIED TO DETERMINE THE STRUCTURAL APPROPRIATENESS OF THE DESIGN & WILL NOT ASSUME RESPONSIBILITY FOR IMPROPER ENGINEERING, CONSTRUCTION OR USE. ALL MATERIALS AND CONSTRUCTION MUST MEET THE MOST STRINGENT LOCAL SAFETY FIRE CODES.

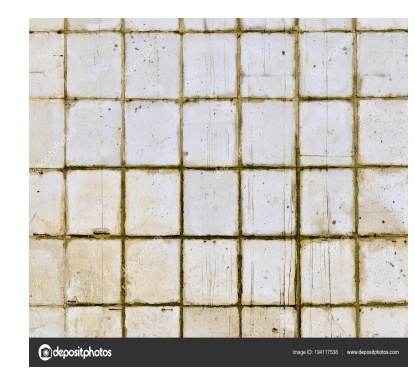
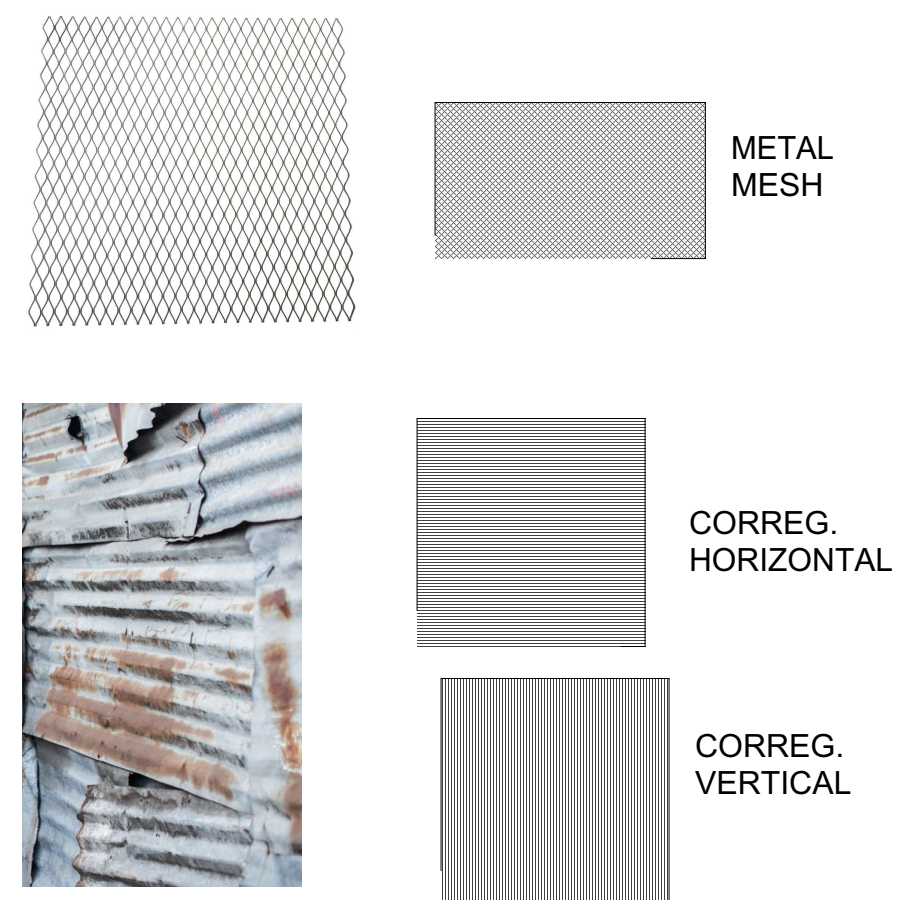
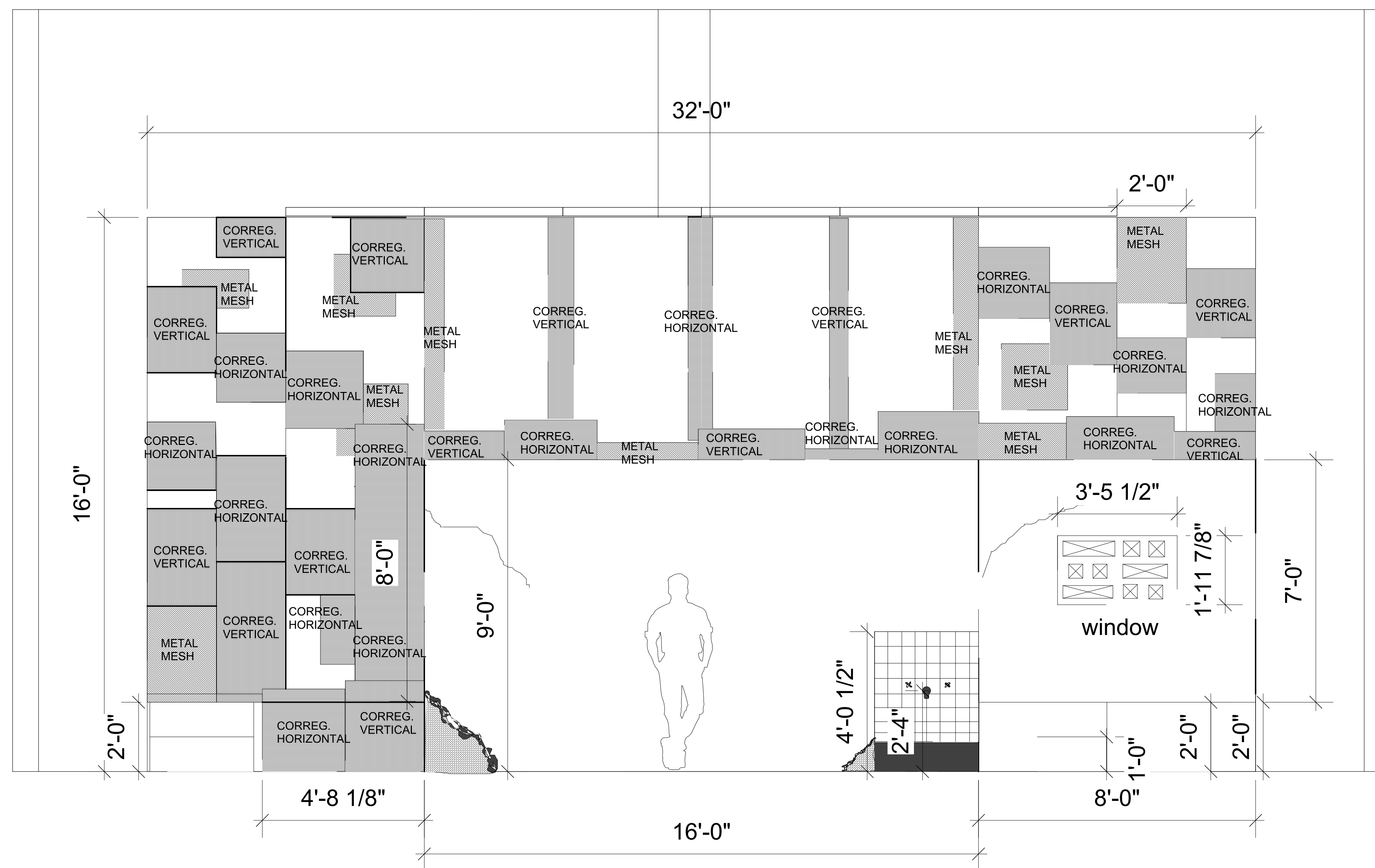
USI Theatre: 2019-20 Season
Eclipsed
 by Danaí Gurra

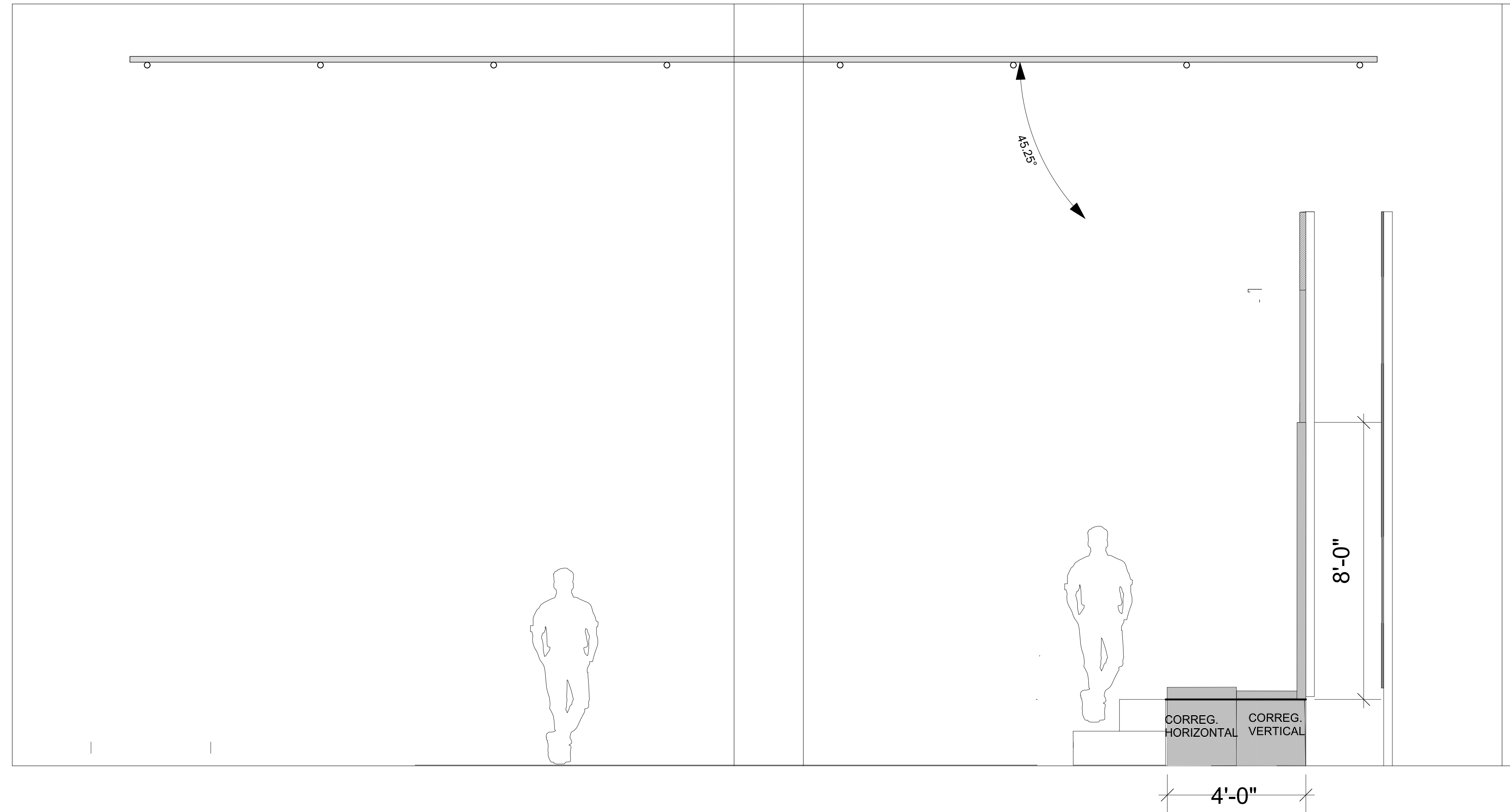
FRONT: FRONT ELEVATION

Notes and Revisions:

Location: Mallette Theatre Univ. of Southern Indiana
 Directed by: Jesmelia Williams
 Scenic Design By: Jacelyn Stewart
 Lighting Design By: Zak Johnston
 Technical Director: Jason Merslich
 Drawn By: JAS
 Date: 2/16/20
 Scale: 1/2" = 1'-0"

Plate: **2**
 of 7
 REVISION DATE: 2/16/20





Stage Right View Split from Center

THIS DRAWING REPRESENTS VISUAL CONCEPTS AND CONSTRUCTION SUGGESTIONS ONLY. THE DESIGNER IS UNQUALIFIED TO DETERMINE THE STRUCTURAL APPROPRIATENESS OF THE DESIGN & WILL NOT ASSUME RESPONSIBILITY FOR IMPROPER ENGINEERING, CONSTRUCTION OR USE. ALL MATERIALS AND CONSTRUCTION MUST MEET THE MOST STRINGENT LOCAL SAFETY FIRE CODES.

USI Theatre: 2019-20 Season
Eclipsed
 by Danaí Gurra

Drawing:
 SR SECTION
 FROM CENTER

Notes and Revisions:

Location:
 Mallette Theatre
 Univ. of Southern Indiana

Directed by:
 Jesmelia Williams

Scenic Design By:
 Jacelyn Stewart

Lighting Design By:
 Zak Johnston

Technical Director:
 Jason Merslich

Drawn By: JAS

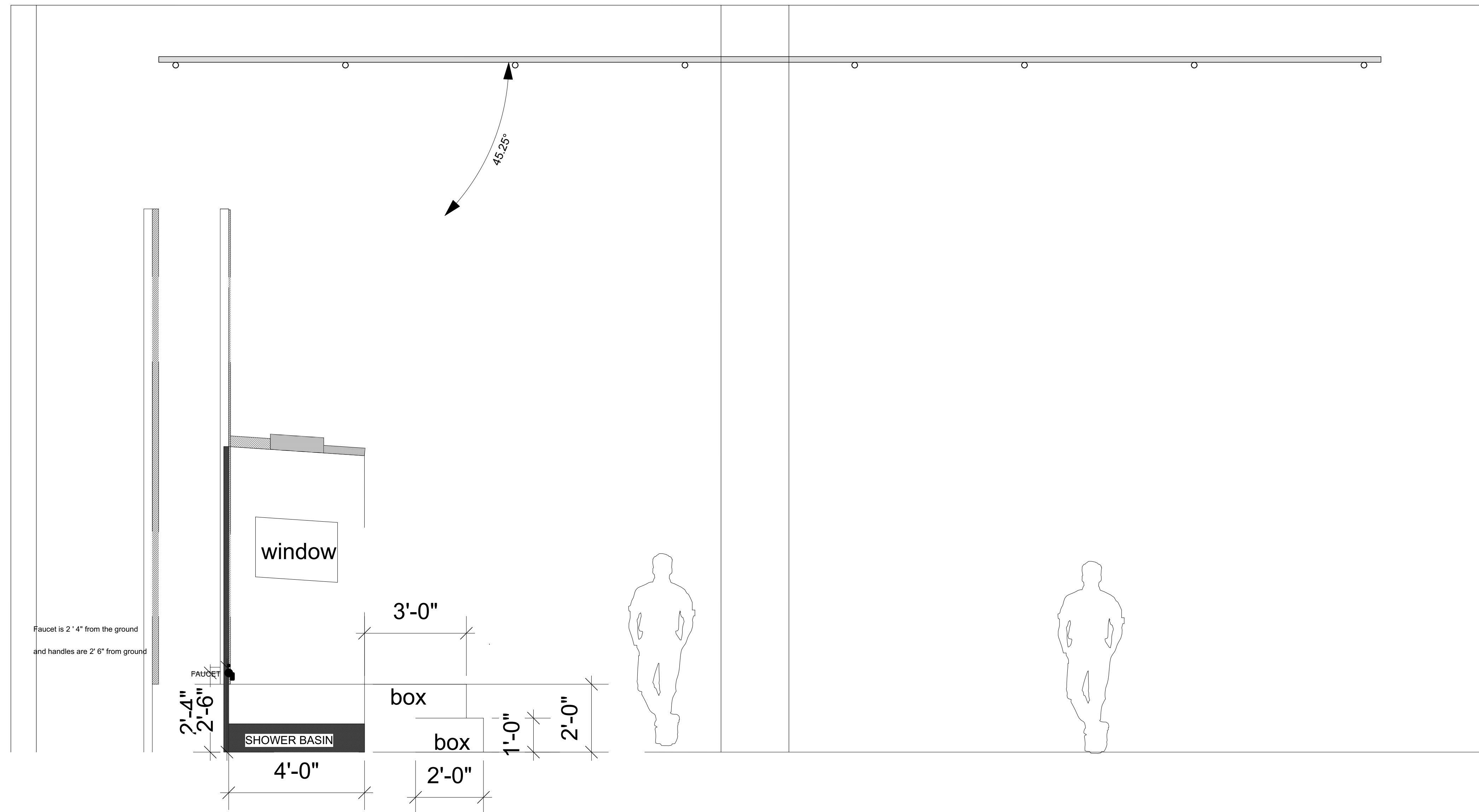
Date: 2/16/20

Scale: 1/2" = 1-0'

Plate:

3
 of 7

REVISION DATE:
 2/16/20



Stage Left View Split from Center

THIS DRAWING REPRESENTS VISUAL CONCEPTS AND CONSTRUCTION SUGGESTIONS ONLY. THE DESIGNER IS UNQUALIFIED TO DETERMINE THE STRUCTURAL APPROPRIATENESS OF THE DESIGN & WILL NOT ASSUME RESPONSIBILITY FOR APPROPRIATE ENGINEERING, CONSTRUCTION OR USE. ALL MATERIALS AND CONSTRUCTION MUST MEET THE MOST STRINGENT LOCAL SAFETY FIRE CODES.

USI Theatre: 2019-20 Season
Eclipsed
 by Danaí Gurriá

Drawing:
 SL SECTION
 FROM CENTER

Notes and Revisions:

Location:
 Mallette Theatre
 Univ. of Southern Indiana

Directed by:
 Jesmelia Williams

Scenic Design By:
 Jacelyn Stewart

Lighting Design By:
 Zak Johnston

Technical Director:
 Jason Merslich

Drawn By: JAS

Date: 2/16/20

Scale: 1/2" = 1'-0"

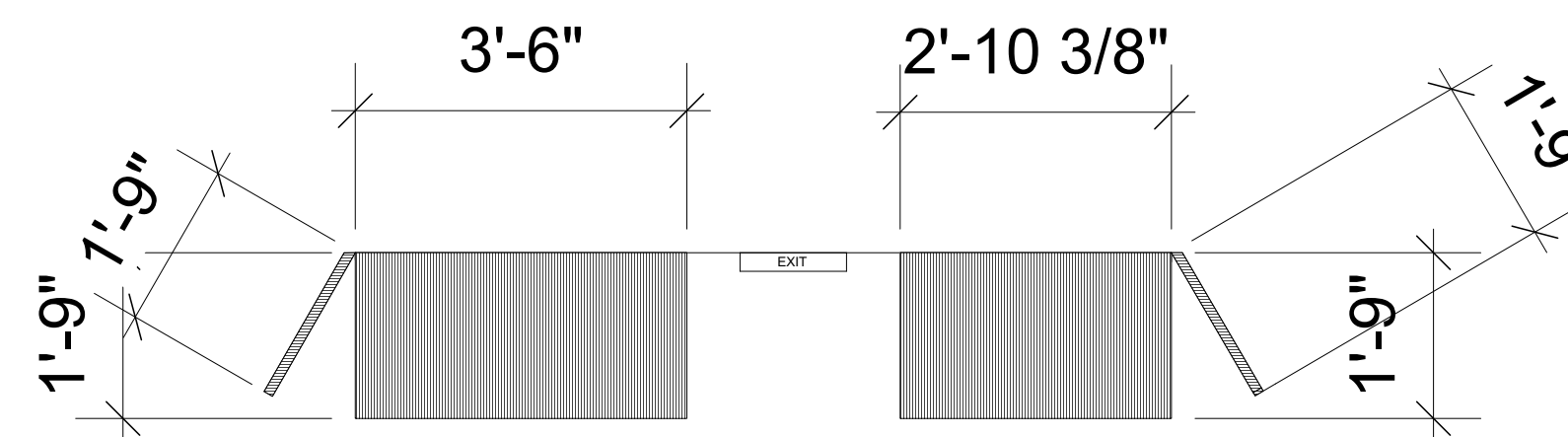
Plate:

4

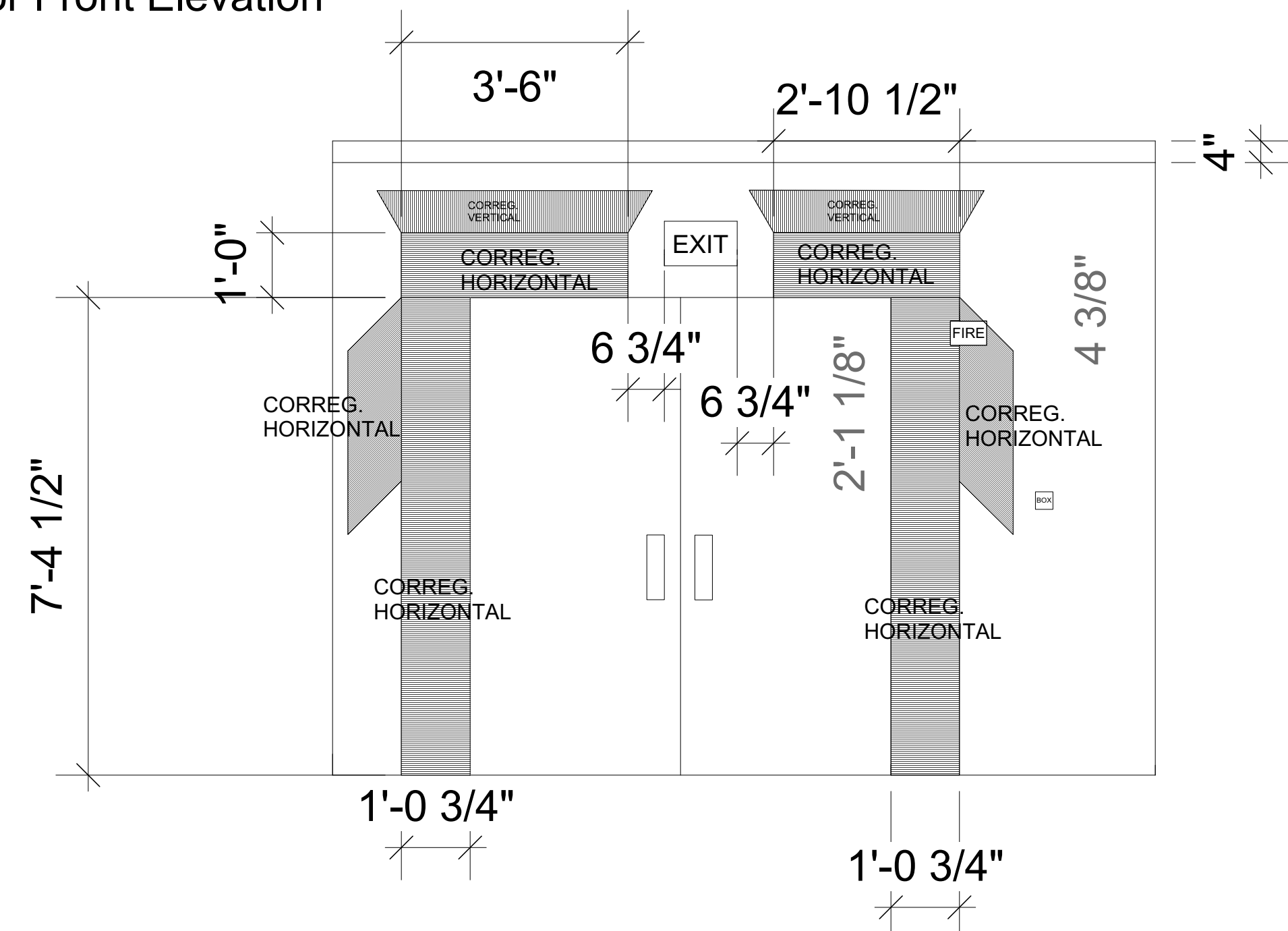
of 7

REVISION DATE:
 2/16/20

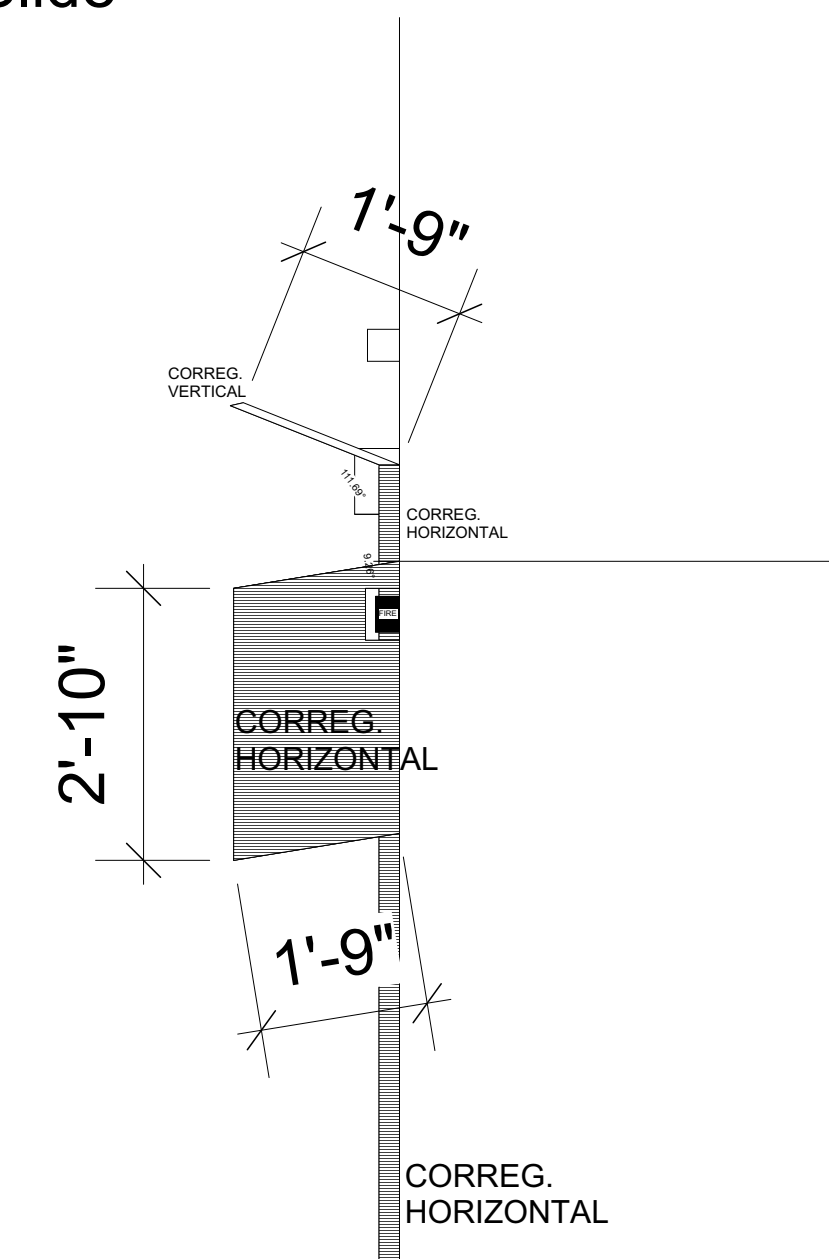
Door Top Elevation



Door Front Elevation



Door Stage Left Slide



NOTE

The right side view of the door is the same length and angles for all metal sheets, but on the right side sheet there is no hole cut out for the fire alarm.

THIS DRAWING REPRESENTS VISUAL CONCEPTS AND CONSTRUCTION SUGGESTIONS ONLY. THE DESIGNER IS UNQUALIFIED TO DETERMINE THE STRUCTURAL APPROPRIATENESS OF THE DESIGN & WILL NOT ASSUME RESPONSIBILITY FOR IMPROPER ENGINEERING, CONSTRUCTION OR USE. ALL MATERIALS AND CONSTRUCTION MUST MEET THE MOST STRINGENT LOCAL SAFETY FIRE CODES.

USI Theatre: 2019-20 Season
Eclipsed
by Danaí Gurra

Drawing: AUDIENCE ENTRY DOORWAY

Notes and Revisions:

Location: Mallette Theatre Univ. of Southern Indiana
Directed by: Jesmelia Williams
Scenic Design By: Jacelyn Stewart
Lighting Design By: Zak Johnston
Technical Director: Jason Merslich
Drawn By: JAS
Date: 2/16/20
Scale: 1/2" = 1-0'

Plate:

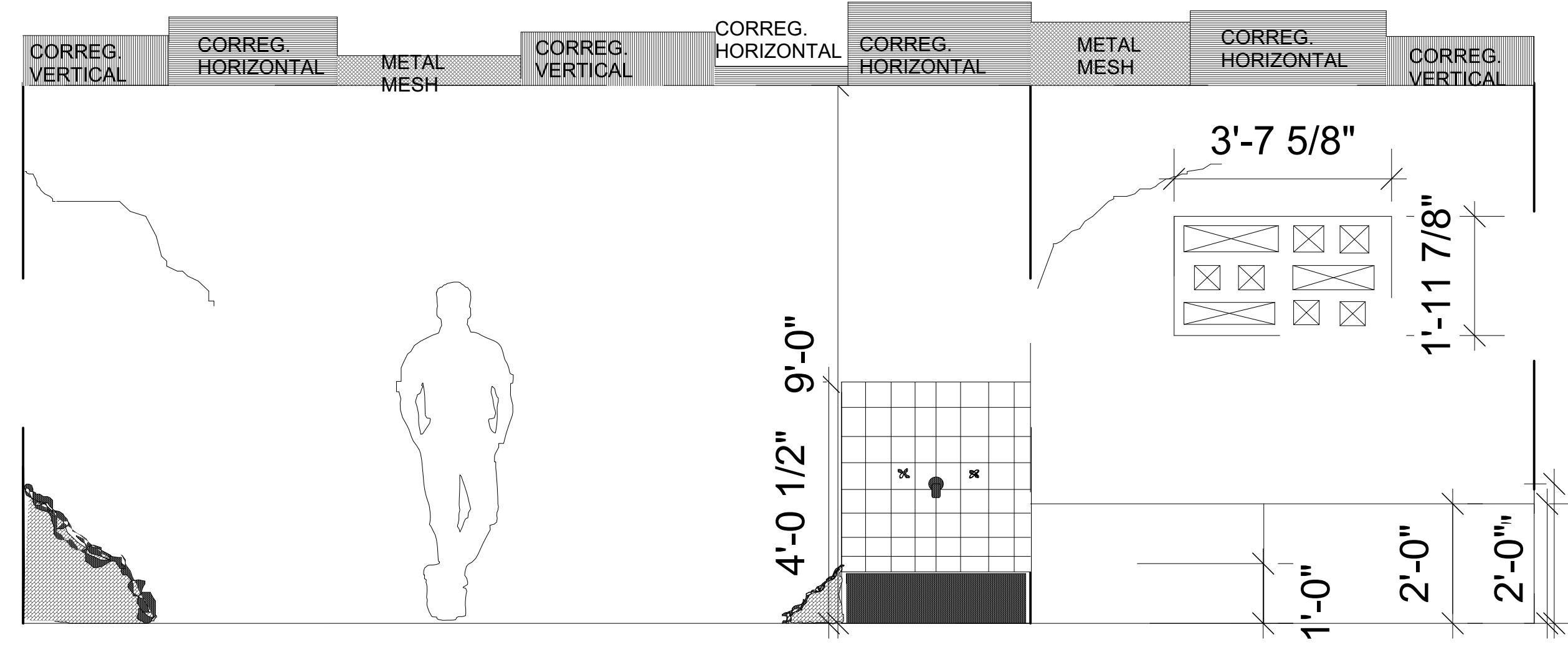
5

of 7

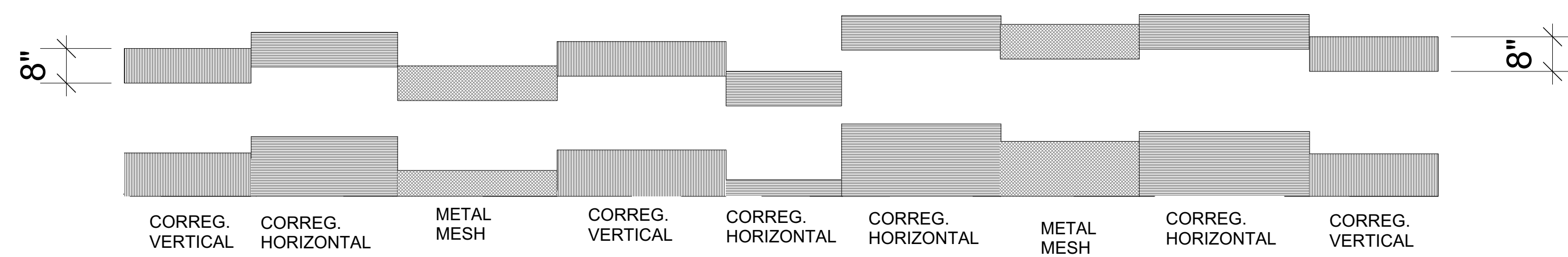
REVISION DATE: 2/16/20

METAL WORK

Metal Work Front Elevation

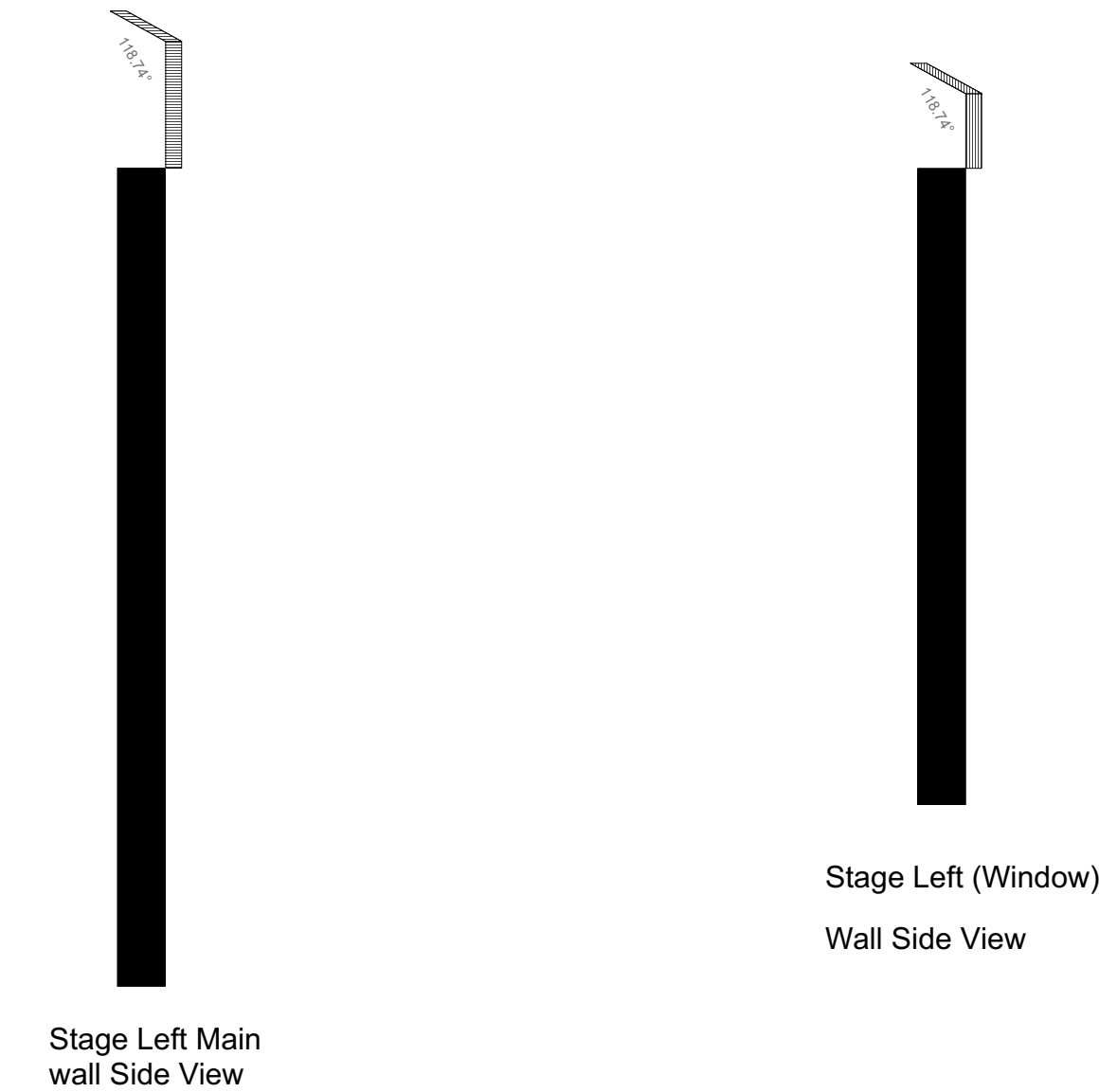


Metal Work Plan View



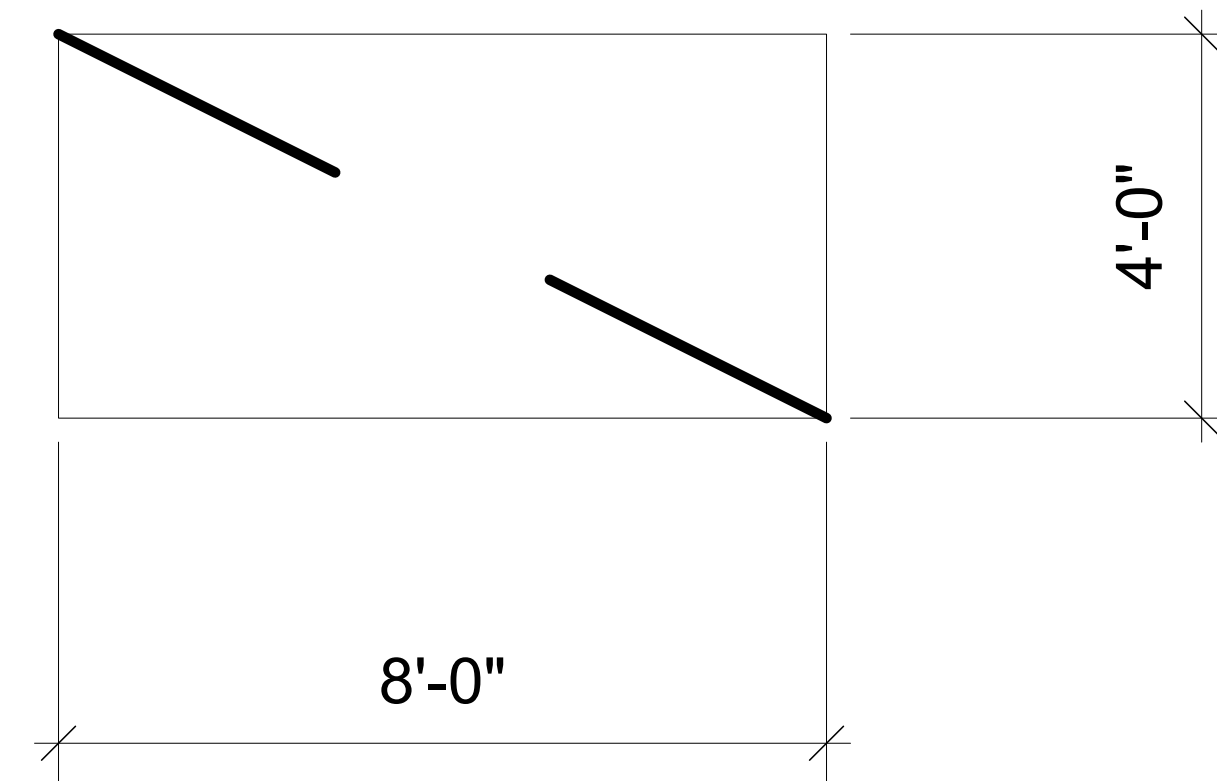
NOTE Every Metal Piece added will be 8 inches in length and bend at a 120 degree angle. Each metal addition will be the made of the same metal it alligns with.

Metal Work Stage Left Side View

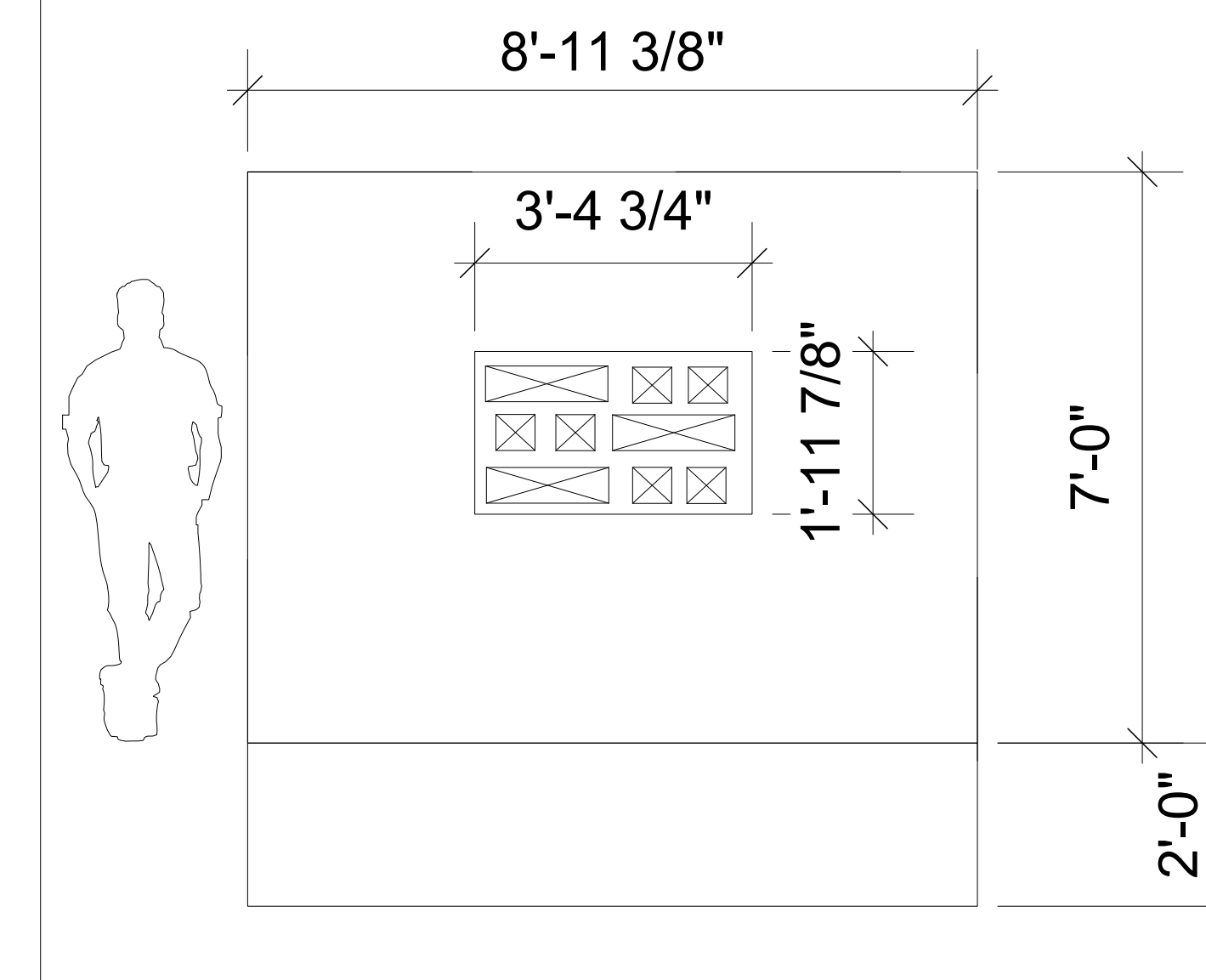


STAGE LEFT SET WALL

Plan View



Front View



THIS DRAWING REPRESENTS VISUAL CONCEPTS AND CONSTRUCTION SUGGESTIONS ONLY. THE DESIGNER IS UNQUALIFIED TO DETERMINE THE STRUCTURAL APPROPRIATENESS OF THE DESIGN & WILL NOT ASSUME RESPONSIBILITY FOR APPROPRIATE ENGINEERING, CONSTRUCTION OR USE. ALL MATERIALS AND CONSTRUCTION MUST MEET THE MOST STRINGENT LOCAL SAFETY FIRE CODES.

USI Theatre: 2019-20 Season
Eclipsed
by Danaí Gurria

Drawing:
METAL WORK & WINDOW

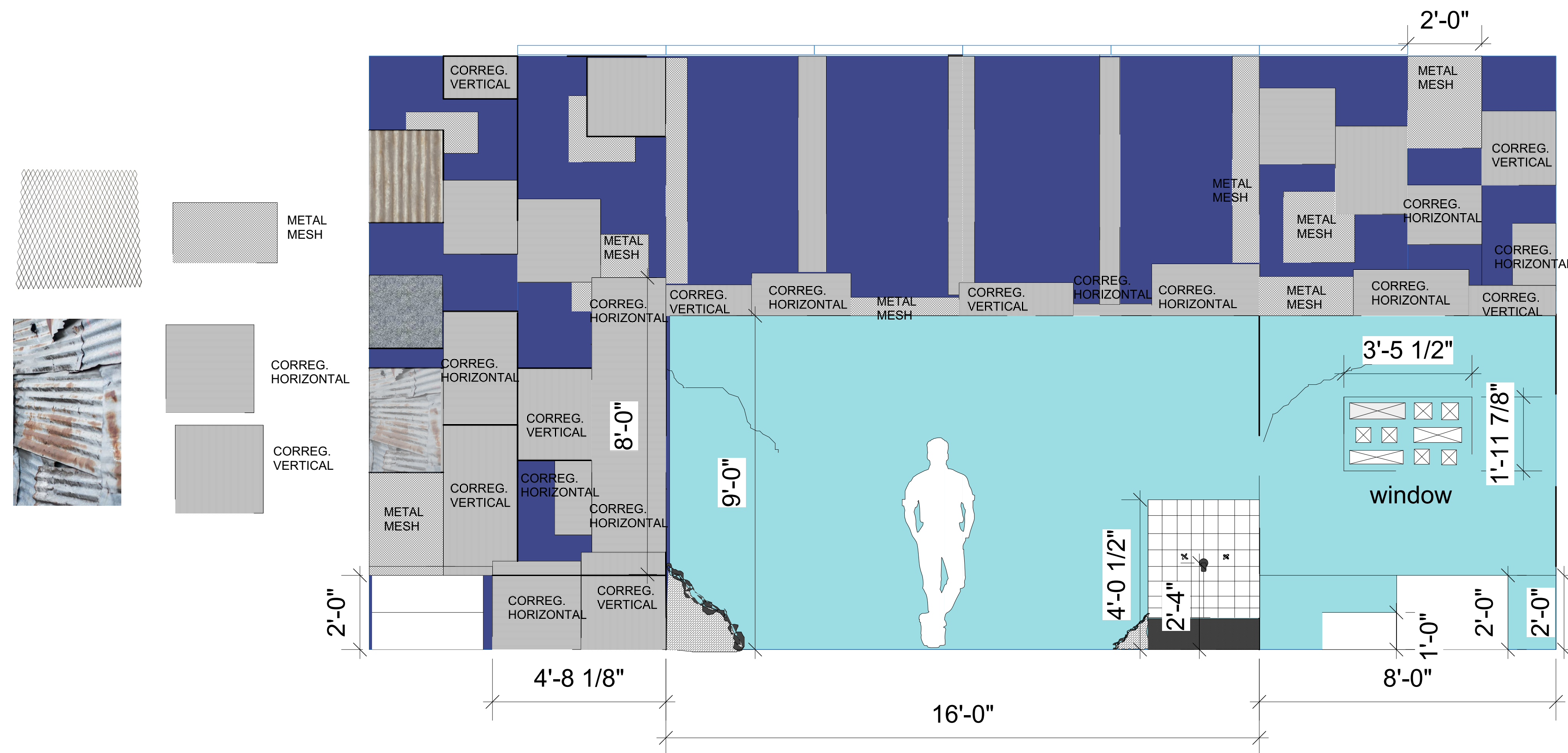
Notes and Revisions:

Location:
Mallette Theatre
Univ. of Southern Indiana
Directed by:
Jesmella Williams
Scenic Design By:
Jacelyn Stewart
Lighting Design By:
Zak Johnston
Technical Director:
Jason Merslich
Drawn By:
JAS
Date:
2/16/20
Scale:
1/2" = 1'-0"

Plate:

6
of 7

REVISION DATE:
2/16/20



THIS DRAWING REPRESENTS VISUAL CONCEPTS AND CONSTRUCTION SUGGESTIONS ONLY. THE DESIGNER IS UNQUALIFIED TO DETERMINE THE STRUCTURAL APPROPRIATENESS OF THE DESIGN & WILL NOT ASSUME RESPONSIBILITY FOR APPROPRIATE ENGINEERING, CONSTRUCTION OR USE. ALL MATERIALS AND CONSTRUCTION MUST MEET THE MOST STRINGENT LOCAL SAFETY FIRE CODES.

USI Theatre: 2019-20 Season
Eclipsed
 by Danaí Gurriá

Drawing: COLORIZED FRONT ELEVATION

Notes and Revisions:

Location: Mallette Theatre Univ. of Southern Indiana

Directed by: Jesmelia Williams

Scenic Design By: Jacelyn Stewart

Lighting Design By: Zak Johnston

Technical Director: Jason Merslich

Drawn By: JAS

Date: 2/16/20

Scale: 1/2" = 1'-0"

Plate:

7
of 7

REVISION DATE: 2/16/20